



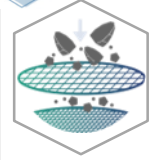
CHARACTERISTICS & FUNCTIONALITIES

LACTOSE MONOHYDRATE

80 MESH



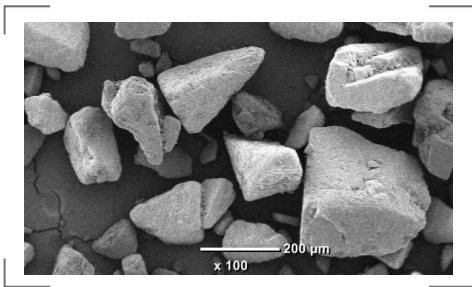
DESCRIPTION



ARMOR PHARMA™ lactose monohydrate 80M is a coarse sieved powder of α -lactose monohydrate.

This lactose is produced in ARMOR PHARMA™ dedicated & state-of-the-art facility in Loudéac (France). Manufactured under EXCIPACT™ GMP standards, it conforms to Ph.Eur, USP-NF and JP lactose monohydrate monographs.

SEM (Scanning Electron Microscopy)



KEY BENEFITS

- Very good flowability
- Narrow PSD
- Storage stability

APPLICATIONS

- Blends
- Direct Compression (associated with a DC lactose)

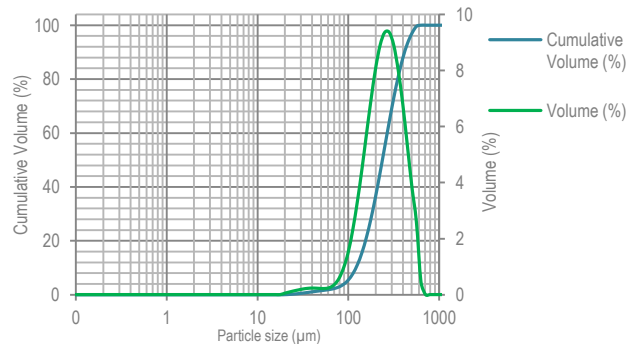


PARTICLE SIZE DISTRIBUTION (PSD)

PSD (Air jet sieve)	Specifications (%)
% < 100 μm	≤ 20
% < 400 μm	98 - 100

Sieving process gives coarse particles with a narrow particle size distribution enabling very good flowability.

PSD (Malvern Laser diffraction, indicative values)

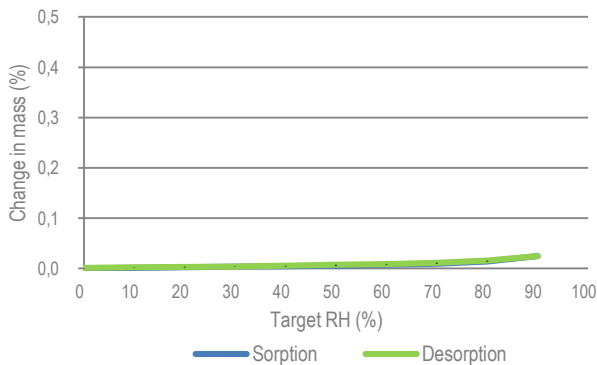


x_{10} : 122 μm x_{50} : 238 μm x_{90} : 417 μm



MOISTURE SORPTION

DVS (Dynamic Vapor Sorption)



The hygroscopicity of α -lactose monohydrate is very low which enables high stability both in storage as well as in formulations



FLOWABILITY

According to flowability index measured by Flodex, ARMOR PHARMA™ lactose monohydrate 80M exhibits a “very good” flowability.

- POURED DENSITY: 0.77 g/mL
- TAPPED DENSITY: 0.87 g/mL
- CARR'S INDEX: 11 %
- HAUSNER RATIO: 1.13

How would you **like** your lactose?

The data contained in this document are for information purposes only and are non-contractual. For more information, contact us: contact@armor-pharma.com